

*T&A Taisei Co. Ltd.*



A leading company of OEM Manufacturing

Japan



COMPANY NAME

**Taisei Co., Ltd.**

HEAD OFFICE, MAIN FACTORY & 2ND FACTORY

**986-1, 2-Chome, Yashio City, Saitama Pref. 340-0811, JAPAN**

3RD FACTORY

**476-1, Nishi, Kizone, Yashio City, Saitama Pref. 340-0813, JAPAN**

PRESIDENT

**Mr. Yasuaki Tomita**

CAPITAL

**16 million Japanese Yen**

FOUNDED

**August, 1978**

EMPLOYEE

**58 as of December, 2019**

PRODUCTION FACILITY

- Automatic Injection Machine 30 units**
- Automatic Assembly Machine 12 units**
- Automatic Labeling Machine 10 units**
- Automatic Shrink-Wrapping Machine 2 units**
- Ink Filling Machine 10 units**
- On-Demand Label Producer 1 units**

MATERIAL SUPPLIERS

**Aubex, Teibow, Tsukasa Felt Shoji, Epoch Chemical, etc.**

AFFILIATE COMPANY

**Epoch Chemical Co., Ltd. (Injection Molding Plant)**



MAJOR CATEGORY OF PRODUCTION

<Valve action system or Ink Reservoir system Marker>

Permanent Opaque Paint Marker	Sign Pen
White Board Marker	Fine Liner
Oil surface Marker	Drawing Pen
Write On Wet Marker	Comic Marker
Opaque Fluorescent Chalk Marker (Wet erase, Dry erase)	Diamond Marker
Industrial Rubber Marker	Fabric Marker
Skin Art Marker	Porcelain Marker
Fluorescent Brilliant Marker	Lab Marker
Brilliant Metallic Marker	Wood Marker
Laundry Name Pen	Washable Marker
Glow Marker	Grout Stain Marker
Tailor's Chalk Marker	Permanent Marker
Highlighter	UV Light Marker
	Memory Marker

<Others>

Various Mechanical Pencils	Rubber Stamp
Ball Point Pens for novelty or SP requirements	Roller Stamp
Stain Remover	Masking Tape

***Always ready for you.***

*We are one of the leading OEM manufacturing company for writing instruments in Japan. We have our production plant, R&D with a dedicated team of experts, located in Saitama Prefecture.*

*Depending on our customer's requirement we develop not only the ink, but we also design and personalize the components for you as per your expectations.*

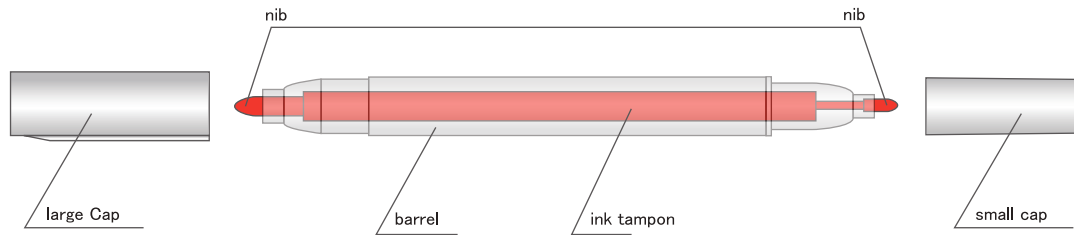
*The quality comes in with the world class Japanese standard, creating a uniqueness in every product.*

*We have experienced bilingual sales and customer service team to accomodate you in Japan and oversea for commercial as well for the industrial marketplace.*

## INK FEEDING SYSTEM & NIBS

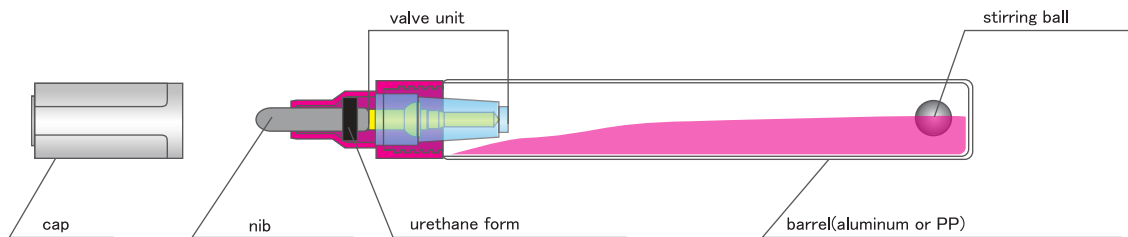
### ◎ Ink reservoir system

Example

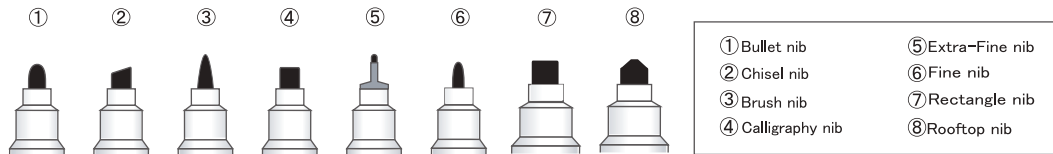


### ◎ Valve action system

Example



### ◎ Shape of nibs



## BASIC NATURE OF INK

Category	Water Based Ink Main solvent: Water		Oil Based Ink Main solvent: Alcohol, Xylene or Xylene-Free	
	Pigment Based Ink	Dye Based Ink	Pigment Based Ink	Dye Based Ink
Basic Features				
Opaqueness	◎	△	◎	△
Write on most surfaces	○	×	◎	◎
Color Appearances	◎	○	◎	○
Waterproof on papers	◎	△	◎	◎
Wash-resistant on fabrics	◎	△	◎	○
Lightfast	◎	×	◎	△
Overlap Writing	○	×	◎	×

**【MODEL】**

**Aluminum Barrel**    Valve action sytem

Material   Barrel : Aluminum / Cap, Holder : PP, POM



φ11 Body  
Length: 132mm x φ11mm



φ15 Body  
Length: 141mm x φ15mm



φ28-L85 Body  
Length: 137mm x φ28mm



φ28-L95 Body  
Length: 144mm x φ28mm



φ28 Long Body  
Length: 162mm x φ28mm

**【Available Nib】**



Ex-Fine



Fine



Calligraphy



Bullet



Chisel



Rectangle



Roof-Top

## Xylene based pigment ink



### Paint Marker

<Available ink colors>



Applicable in most surfaces for varieties of purposes like expert artistic use, gardening and hobby craft for instance. Good for weather proof and light fast.



### Industrial Paint Marker

<Available ink colors>



This is formulated to work in tough industrial environments. It is fast drying, permanent and virtually can be applied all surfaces, like metal, ceramic, glass etc.



### Brilliant Metallic Marker

<Available ink colors>



The ink has brilliant brightness, authentic metallic finishes in opaque. It is permanent ink, fast drying and water resistant.



### Outline Marker

<Available ink colors>



It can be applied in papers, metallic line with colored outline. Permanent ink good for hobby craft, designing and arts for all generations.



## Xylene free pigment ink



### Paint Marker

<Available ink colors>

- White
- Black
- Red
- Blue
- Green
- Yellow
- Brown
- Violet
- Orange
- Lt. Blue
- Lt. Green
- Rosemarie
- Cream Yellow
- Grey
- Dark Blue
- Gold
- Silver
- Copper
- Black Pearl
- Red Pearl
- Lt. Blue Pearl
- Green Pearl

Applicable for most of the surfaces. It has been applied for variety of purposes, like as industrial use. It's safe, good for weather proof and light fast.



### Write On Wet Marker

<Available ink colors>

- White
- Black
- Red
- Blue
- Green
- Yellow

Suitable for writing in any surfaces, especially good in writing on wet surfaces at industrial and construction areas.



### Laboratory Marker

<Available ink colors>

- Black
- Red
- Blue

Invented for writing on surfaces of experiment instruments for laboratory use. Special formulated ink has high resistance for alcohol. Erasable by Acetone and Xylene.



### Alcohol Glitter Marker

<Available ink colors>

- Met. Red
- Met. Blue
- Met. Yellow
- Met. Green
- Met. Violet
- Met. Magenta

It contains a fine glitter micro pigments and suitable for writing, coloring, embellishing on the papers, windows and many more. It creates sparkling on your letter and illustration.



## Xylene based dye ink / Xylene Free dye ink

### Permanent Marker

<Available ink colors>



Permanent markers that can be used on most surfaces. Waterproof and weather resistant.

It's quick drying, especially good for writing in metal surfaces.

## Others

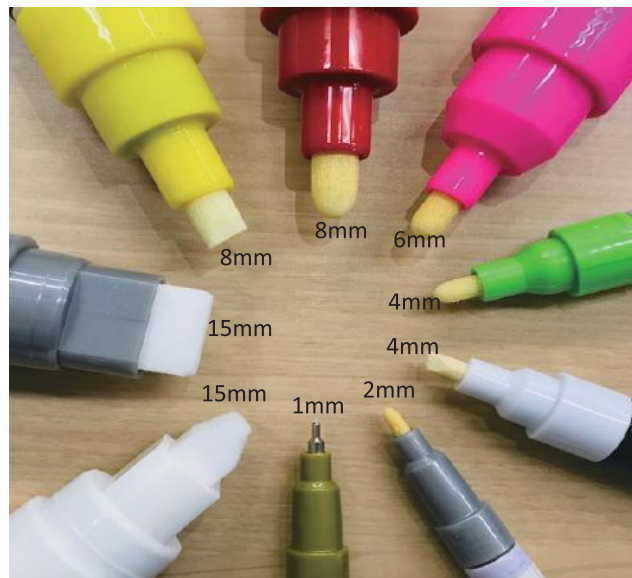
### Paint Remover Marker

<Available ink colors>



Special formulated ink to take out the paint color. Use the marker tip to apply the solvent to the painted surface and wipe off by tissue paper.

## Nib Variation



*We can develop an ink, design components for you to meet your expectation and customize which we believe it would suit your requirements....*

**【MODEL】**

**Plastic Barrel**    Valve action sytem

Material    Barrel : Plastic / Cap, Holder : PP



φ12.5 Body  
Length: 126mm x φ12.5mm



φ16.5 Body  
Length: 142mm x φ16.5mm



φ24 Body  
Length: 120mm x φ24mm



φ28 Short Body  
Length: 121mm x φ28mm



φ28 Long Body  
Length: 156mm x φ28mm

**【Available Nib】**



Ex-Fine



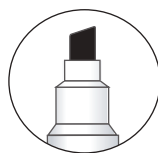
Fine



Calligraphy



Bullet



Chisel



Rectangle



Roof-Top

## Water based pigment ink

### Poster Marker

<Available ink colors>



○ White	● Black	● Red	● Blue	● Green	● Yellow	● Brown
● Violet	● Orange	● Bubblegum Pink	● Warm Grey	● Pink	● Lt. Blue	● Lt. Green
● Pale Orange	● English Red	● Pumpkin	● Wisteria	● Aquamarine	● Celery	● Aubergine
● Celadon	● Turquoise	● Jade Green	● Gold	● Silver	● Met. Red	● Met. Blue
● Met. Green	● Met. Violet	● Fl. Green	● Fl. Yellow	● Fl. Orange	● Fl. Pink	* Other Brilliant colors

Poster markers contain vivid opaque water-based poster paint which is ideal for posters, menu boards and hobby craft use. Ideal for use on card, metal, plastic and glass etc.

### Chalk Marker

<Available ink colors>



○ White	● Fl. Red	● Fl. Blue	● Fl. Green	● Fl. Yellow	● Brown	● Fl. Violet
● Fl. Orange	● Fl. Pink	● Beige	● Cream	● Leaf Green	● Gold	● Silver
● Met. Pink	● Met. Blue					

Wet erasable marker for black board. Suitable for making welcome boards for store and menu boards. Easy erase by wiping with damp cloth.

### Fabric Marker

<Available ink colors>



○ White	● Black	● Red	● Blue	● Green	● Yellow	● Pink
● Emerald Green	● Pastel Pink	● Pastel Violet	● Pastel Orange	● Pastel Green	● Pastel Blue	● Pastel Grey
● Glitter Gold	● Glitter Silver	● Glitter Copper	● Glitter Pink	○ Tailor's Chalk		

Marker for light-color and dark-color fabrics. Especially good for writing in dark-fabric. Need ironing for fixing the color on the fabric.

### Laundry Name Pen

<Available ink colors>



○ White	● Black
---------	---------

Suitable for writing names in fabric (school uniform, shoes etc.). It is recommend ironing to fix the ink stably on the fabric.

**New Arrival** *approved in 2020*



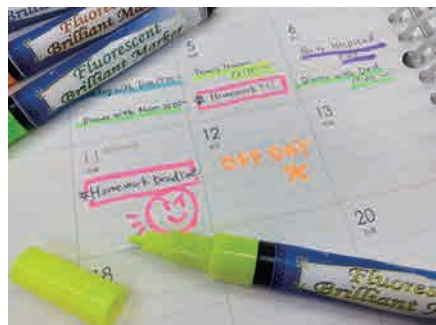
**Skin Art Marker**

<Available ink colors>

- White
- Black
- Red
- Blue
- Green
- Yellow
- Brown
- Pink
- Lt. Blue
- Ochre
- Pale Violet
- White Pearl

*Cosmetic Approval Registration Product*  
**Skin Art Marker for "Great Appearance & Expression"**

Ink is mainly developed for painting on the skin, it is composed by cosmetic ingredients.  
 Excellent opacity, water resistance, safe and easily washable by warm water / soap.



**Fluorescent Brilliant Marker**

<Available ink colors>

- Fl. Blue
- Fl. Green
- Fl. Yellow
- Fl. Violet
- Fl. Orange
- Fl. Pink

Good performance with high resistance for writing in papers, showing the sparkling shining in the illustration or letters.



**Grout Stain Marker**

<Available ink colors>

- White

Seal and stains grout. Good for protecting grout color, also covering mold and prevent to regrow mold. Can be used in various places where tiles been used.



**Industrial Rubber Marker**

<Available ink colors>

- White
- \*Additional colors are under development.

Suitable for writing in tires or in any rubber materials.  
 Ink does not break and its water proof and last longer.



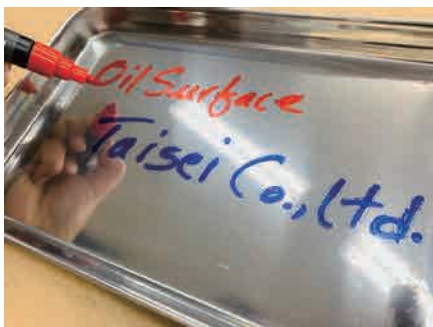
### Ceramic Marker

<Available ink colors>

- White
- Black
- Red
- Blue
- Green
- Yellow

6 color of markers for permanent ceramic decoration, non-toxic ink. No need to bake in the oven to fix the color on the ceramic. This marker is used for designing or decolating purposes only. It cannot be used for taking meals on this plate once written.

### Alcohol based dye ink



### Oil surfaces Marker

<Available ink colors>

- Red
- Blue
- Yellow

Suitable for marking or writing on oily surfaces in factories.

### Others



### Glue Marker

<Available ink colors>

- White
- Lt. Blue

Suitable for making paper craft works, convenient to put glue in the narrow areas. Nox-toxic and acid-free. Blue color glue changed into clear color once get dry.

### Nib Variation

Same as page No. 8.



*We also provide the best quality and guarantee the peculiarity of the products with our dedication providing good service and support for customer...*



**【MODEL】**

**Plastic Barrel** Ink reservoir system

	1195S Length: 120mm x 11.5mm
	1195W Length: 142mm x 11.5mm
	1112S Length: 145mm x 11.5mm
	1112W Length: 167mm x 11.5mm
	9113S Length: 112mm x 13mm
	9113W Length: 135mm x 13mm
	9113FS Length: 117mm x 13mm
	1142 Length: 142mm x 17mm
	B-101 Length: 111mm x 13mm
	L-89-80 Length: 125mm x 9.5mm
	B151 Length: 92mm x 23.8mm
	OD Length: 141mm x 10mm
	8080 Length: 138mm x 11mm



HCM  
Length: 125mm x 16mm  
(per pc)



EDC  
Length: 67mm x 13mm  
(per pc)



TAPIR  
Length: 125mm x 25mm  
Thickness: 10mm



ETB12  
Length: 144mm x 11.5mm



ETS  
Length: 152mm x 18mm



CT (Valve action system)  
Length: 125mm x 16mm



DS  
Length: 62mm x 14mm

【Available Nib】



Ex-Fine



Fine



Calligraphy



Bullet



Chisel



Brush



## Water based pigment ink

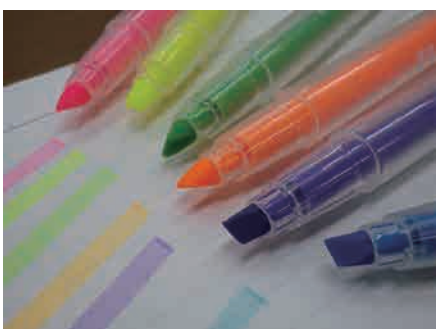


### Sign Pen

<Available ink colors>

- Black
- Red
- Blue
- Green
- Yellow
- Brown
- Violet
- Orange
- Pink
- Lt. Green
- Sky Blue
- Salvia Blue
- Emerald
- Dark Red
- English Red
- Dull Red
- Vermillion
- Lt. Brown
- Burnt Umber
- Sepia
- Brownish Grey
- Coral Pink
- Bubblegum Pink
- Mustard
- Citrus Yellow
- Iris Purple
- Wine
- Yellow Orange
- Beige
- Pale Orange1
- Pale Orange2
- Pale Orange3
- Dark Grey
- Ash Grey
- \*More than 60 colors available.

Suitable for convenient documents write up, note taking, sketching, coloring, graphic, for making signatures, lettering and so on.



### Highlighter

<Available ink colors>

- Pink
- Yellow
- Lt. Green
- Lt. Blue
- Orange
- Violet
- Soft Pink
- Soft Yellow
- Soft Green
- Soft Blue
- Soft Orange
- Soft Violet
- Red
- Blue

Very common & widely used all over the world. Highlighter is a type of writing material to mark and draw attention to the number or letters by marking them with a fluorescent transparent ink.



### Drawing Pen

<Available ink colors>

- Black
- Red
- Blue
- Green
- Yellow
- Brown
- Orange
- Pink
- Purple
- Wine Red
- Cobalt Blue
- Green Deep
- Cool Grey
- Sepia

Available nib type					
0.03mm	0.05mm	0.1mm	0.2mm	0.3mm	0.4mm
0.5mm	0.8mm	1.0mm	Brush	Chisel	Calligraphy

Suitable for illustration, technical drawing and memo/note. Variety of nib size with metal nib holder or brush. Good performance with high water resistance after dry.



### Permanent Marker

<Available ink colors>

- White
- Black
- Red
- Blue
- Green
- Yellow
- Violet
- Orange
- Magenta
- Grey

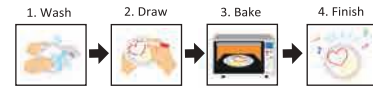
Water based opaque permanent marker. It's odorless and suitable for writing in any surfaces and dark location / papers.



### Ceramic Marker

<Available ink colors>

- Black
- Red
- Blue
- Green
- Yellow
- Brown
- Violet
- Orange
- Lt. Blue
- Lt. Green
- Pale Orange
- Lemon Yellow
- Sepia
- Pastel Violet
- Pastel Pink
- Pastel Grey



Special formulated ink to create your own design. Just putting in oven for fixing color by 230 degree for 20 minutes. It's safe and can be used for taking meals on this plates after baked.



### Fabric Marker

<Available ink colors>

- Black
- Red
- Blue
- Green
- Yellow
- Brown
- Violet
- Orange
- Lt. Blue
- Lt. Green
- Pink
- Grey
- Fl. Blue
- Fl. Green
- Fl. Yellow
- Fl. Violet
- Fl. Orange
- Fl. Pink
- Tailor's Chalk

Marker for light-color fabrics. It can perform not only good coloring, but also non-bleeding and odorless. Need ironing for fixing the color on the fabric.



### Chalk Marker

<Available ink colors>

- White
- Black
- Fl. Red
- Fl. Blue
- Fl. Green
- Fl. Yellow
- Fl. Violet
- Fl. Orange
- Fl. Pink

Wet erasable marker for black board. Suitable for making welcome boards for store and menu boards. Easy erase by wiping with damp cloth.



### Kitchen Marker

<Available ink colors>

- White
- Black
- Red
- Blue
- Green
- Yellow
- Orange
- Pink
- Lt. Green

Perfect for drawing and writing on food packaging film. Drawn or written portions can withstand freezing in refrigerator and defrosting by microwave.

## Water based dye ink



### Sign Pen

<Available ink colors>



Good for illustrations, coloring, art and hobby in any different purposes.

Easy to use for beginners, and budget-friendly.



### Pop Up Marker

<Available ink colors>



Color change marker, suitable for children, designer and hobby crafts. Using the dark color based marker and writing over by clear ink marker, which make appearance of 6 different colors.



### Memorization Pen

<Available ink colors>



Good for study purposes, especially for memorizing words, names, equations or numbers by highlighting them and covering by red film which makes the word invisible.

Once completed the memorization, can erase the highlighted areas by over highlighting with clear ink, and the ink disappeared.



### UV Light Marker

<Available ink colors>



2 different basic color, Clear and Grey. These colors will change to Red, Blue and Green while light up with UV light. It is used in different sector for authentic purpose, like for security purposes / situation to identify or to prevent secret messages and important addresses.



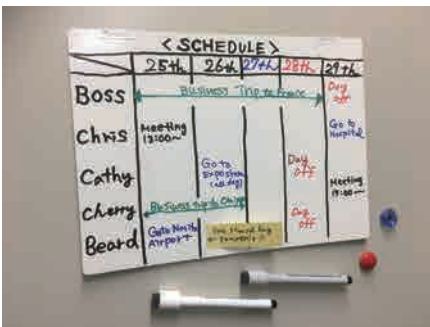
### Washable Marker

<Available ink colors>

- Black
- Red
- Blue
- Green
- Yellow
- Brown
- Violet
- Orange
- Lt. Blue
- Lt. Green
- Pink
- Pale Orange

Washable and non-toxic ink. Easy to wash out when children doodled on clothes.

### Alcohol based pigment ink



### White Board Marker

<Available ink colors>

- Black
- Red
- Blue
- Green
- Violet
- Orange

Suitable for most of Whiteboards.



### Non-Dry White Board Marker

<Available ink colors>

- Black
- Red
- Blue
- Green
- Violet
- Orange

The marker is hard to get dry even place with cap off.



## Alcohol based dye ink



### Comic Marker

<Available ink colors>

- Black
- Red
- Blue
- Green
- Yellow
- Brown
- Violet
- Orange
- Lt. Blue
- Lt. Green
- Pink
- Grey
- Ochre
- Olive Green
- Pale Orange
- Steel Blue
- Dark Brown
- Carmine
- Magenta
- Dark Grey
- Lemon Yellow
- Gold Ochre
- Beige
- Bottle Green
- Silver Grey
- Olive Brown
- English Red
- Prussian Blue
- Pale Violet
- Laurel Green
- Oriental Blue
- Pale Green
- Coral Pink
- Manganese Blue

\*More than 93 colors available.

Good for illustrations, coloring, art and hobby in any different purposes.

Easy to use for beginners, and budget-friendly.



### Permanent Marker

<Available ink colors>

- Black
- Red
- Blue
- Green
- Yellow
- Violet
- Orange
- Brown
- Lt. Blue
- Lt. Green
- Pink
- Melon

Permanent ink. Good for writing names and can use them to mark on glass, plastic, wood, metal, and more. It contains alcohol based and non-toxic ink. The marker is hard to get dry even place with cap off.



### Wood Marker

<Available ink colors>

- Cypress
- Light Oak
- Sage
- Chestnut
- Dark Brown
- Mahogany
- Sand
- Grey
- Ebony
- Dark Walnut
- Cherry Wood
- Dark Oak
- Walnut

Applicable for concealing scratches on floor or wood furnitures. DIY or hobby craft use are also available.



### Diamond Marker

<Available ink colors>

- Black
- Red

Invented for marking in diamonds for cutting. Nib: 0.03mm and 0.05mm are available.

## Others



### Stain Remover

<Available ink colors>

● Clear

Convenient for instant removing stains like, oily sauces, juice etc. on various clothes (especially good for cotton fabric). Applicable for the both oily and water-based stain.

Available 3 types - Fragrance free, Grapfruit and Flower garden fragrance.

Possible to use 3 to 4 times.

## Ball Point Pen



### Single nib pen

<Available ink colors>

● Black ● Red ● Blue ● Green ● Yellow ● Violet ● Fl. Orange  
● Fl. Blue ● Fl. Green ● Fl. Pink

Simple design with appropriate ball point pen and oil-based ink.

It is very reliable and exceptional writing comfort you can feel.

Extremely versatile, light and ideally suited to fast writing and note-taking in everyday use.

Available in a variety of appealing colors.



### Twin nib pen

● Black ● Red ● Blue ● Green ● Yellow ● Violet ● Fl. Orange  
● Fl. Blue ● Fl. Green ● Fl. Pink

Round flat type with a unique design and its classic for their functionality.

(one knock system with 2 nibs)

Easy to switch another ink color and comfort to use for writings.

*Inks, components, producing and assembling in Japan at our own factory. All the products are genuinely "Made in Japan". Well advanced, durable, high quality, long lasting and safe products...*

*We are "Always ready for you".*

Product Specification

Ink Type	Type of Marker	Model	Kinds of Markers	Available Colors	Writing Objects									
					Paper	PP	Metal	Glass	Others	White Board	Black Board			
Water Based Pigment Ink	Ink Reservoir System	1195/1112	Sign pens & Other Markers	60	⊙									
		1142	Chalk Marker (Dry Erase)	9		○		○		○	⊙			
		1112 / 1142	Paint Marker / Poster Marker	10	⊙	⊙	⊙	⊙						
		OD / 8080	Drawing Pen / Diamond Marker	14 & 2	⊙									
		1195 / 1112	Ceramic Marker	16					⊙					
		1195 / 1112 / 1010	Fluorescent Marker	18	⊙									
		1112	Kitchen Marker	9					⊙					
		1142	Fabric Marker	18					⊙					
Water Based Dye Ink	Ink Reservoir System	BRS / SRS / 9113FS	Stamp Ink	16	⊙									
		1195 / 1112 / 1010	Sign pens & Other Markers	36	⊙									
		1195	Memorization Pen	4	⊙									
Water Based Pigment Ink	Valve Action System	Φ12.5~Φ28 Plastic Barrel	Chalk Marker (Dry Erase)	19		○		○		○	⊙			
		Φ12.5~Φ28 Plastic Barrel	Chalk Marker (Wet Erase)	17		○		○		○	⊙			
		Φ12.5 Plastic Barrel	Glitter Marker	24	⊙									
		Φ12.5~Φ28 Plastic Barrel	Paint Marker / Poster Marker	22	○	⊙	⊙	⊙						
		Φ16.5 Plastic Barrel	Fabric Marker	19					⊙					
		Φ16.5, Φ28 Plastic Barrel	Grout Stain Marker	1					⊙					
		Φ12.5, Φ16.5 Plastic Barrel	Fluorescent Brilliant Marker	6										
		Φ12.5, Φ16.5 Plastic Barrel	Fabric Name Pen	2										
		Φ16.5 Plastic Barrel	Industrial Rubber Marker	1										
		Φ16.5 Plastic Barrel	Brilliant Metallic Marker	2										
Water Based Dye Ink	Ink Reservoir System	1195 / 1112	Comic Marker	93	⊙	○	○	○						
		1195 / 1112	Permanent Marker / Name Pen	8	○	⊙	⊙	⊙						
		1010	Pop Up Marker	6	⊙									
		1195 / 9113 / HCM	Washable Marker	12	○				○					
		Alcohol Based Dye Ink	Ink Reservoir System	1195 / 1112 / 1142	Non Dry Permanent Marker	12	○	⊙	⊙	⊙				
				Alcohol Based Pigment Ink	Ink Reservoir System	1142 / 9113S / L89 / B151	Whiteboard Marker	6					⊙	
						1142 / 9113S / L89 / B151	Whiteboard Marker (PP)	4					⊙	
		1142 / 9113S / B151	Non-Dry Whiteboard Marker			6					⊙			
		Alcohol Based Pigment Ink	Valve Action System	Φ28 Plastic Barrel	Board Marker	1	○				⊙			
				Φ11 Aluminum Barrel	Alcohol Glitter Marker	6	○	○	○	○				
Φ16.5 Plastic Barrel	Waterproof Blackboard Marker			4						○	⊙			
Xylene Dye Ink	Ink Reservoir System	Φ11~Φ28 Aluminum Barrel	Permanent Marker	4	○	⊙	⊙	⊙						
Xylene Based Pigment Ink	Valve Action System	Φ11~Φ28 Aluminum Barrel	Xylene based Paint Marker	32		⊙	⊙	⊙						
Xylene Free Pigment Ink		Valve Action System	Φ11~Φ28 Aluminum Barrel	Xylene Free Paint Marker	18		⊙	⊙	⊙					
			Φ11, Φ15 Aluminum Barrel	Xylene Free Paint Marker (Metallic)	2		⊙	⊙	⊙					
			Φ15 Aluminum Barrel	Write on Wet Marker	6		⊙	⊙	⊙	⊙				
			Φ11, Φ15 Aluminum Barrel	Xylene Free Paint Marker (Pearl Color)	7		⊙	⊙	⊙					
Alcohol Based Dye Ink	Valve Action System	Φ16.5 Plastic Barrel	Oil Surface Marker	3										
Others	Valve Action System	Shimitori Original Plastic Barrel	Stain Remover	Clear					⊙					
		Φ15 Aluminum Barrel	Paint Removal Marker	Clear					⊙					
		Φ16.5 Plastic Barrel	Glue Marker	2	⊙									
		Φ15 Aluminum Barrel	Seal Remover Marker	Clear					⊙					



<Memo>



*T&T Taisei Co. Ltd.*

---



TEL +81 48 996 9503  
FAX +81 48 997 1245

986-1, 2-Chome, Yashio City,  
Saitama Pref. Japan

[www.tg-taisei.co.jp/eng/](http://www.tg-taisei.co.jp/eng/)

6th Edition issued on January, 2020



*TSD Taisei Co. Ltd.*